



Lighting Solutions Stock Guide



Table of Contents

Indoor

Panels & Troffers

- 04 STACK Switch LED Center Element Lay-In
- 05 CPX LED Panel

Downlighting

- 06 LDN LED Commercial Downlight
- 07 LBR Retrofit Downlight by Lithonia Lighting
- 08 Incandescent 6in Round New Construction Housing by Juno
- 09 E Series LED Baffle Retrofit Downlight by Juno

Strip Lights

- 10 CSS LED Strip
- 11 CSVT Vapor Tight Strip Light

High Bays

- 12 CPHB Compact Pro™ LED High Bay
- 13 CPRB Compact Pro LED Round High Bay
- 14 JEHL LED High Bay

Emergency

- 15 ERE Emergency Remote Light Head
WLTU LED Emergency Light
EU2C Dual LED Lamp Head Emergency Light
ECRG Emergency Combo Unit
- 16 EXRG Emergency Exit Sign

Accessories

- 17 Drywall Grid Adapter by Lithonia Lighting

Outdoor

Area

- 18 ESX1 LED Area Luminaire

Floodlights

- 19 ESXF LED Floodlight

Wallpacks

- 20 TWX LED Adjustable Light Output Wallpack
TWR LED Adjustable, Switchable, Photocell Wallpack by Lithonia Lighting
- 21 WPX0 LED Wall Mount

Canopy

- 21 CNY LED Canopy Lighting

Controls

Switches

- 22 WSXA Wall Switch Sensor
- 23 sPODMA Wall Switch
sPODMRA Switchpod
- 24 nWSXA Low-Voltage Wall Switch Sensor
rPOD Micro AIR Battery-Powered Wall Switch by nLight

Sensors

- 25 CM Ceiling mount, Low Voltage Sensor
CMR Ceiling Mount Occupancy Sensor
LSXR Fixture Mount Occupancy Sensor
- 26 nCM 10 RJB Ceiling Mount Occupancy & Daylight Sensor
nCM ADCX RJB Ceiling Mount Daylight Sensor
rCMSB nLight AIR Battery-Powered Ceiling Mount Sensor

Load Controllers

- 27 PP20 Power Pack
nPP16 Power Relay Pack
- 28 nPP16 ER Emergency Relay Pack
nPP20 PL Plug Load Control Power Pack
rPP20 nLight AIR Power Relay Pack

Relay Panels

- 29 ARP Relay Panel

Controllers

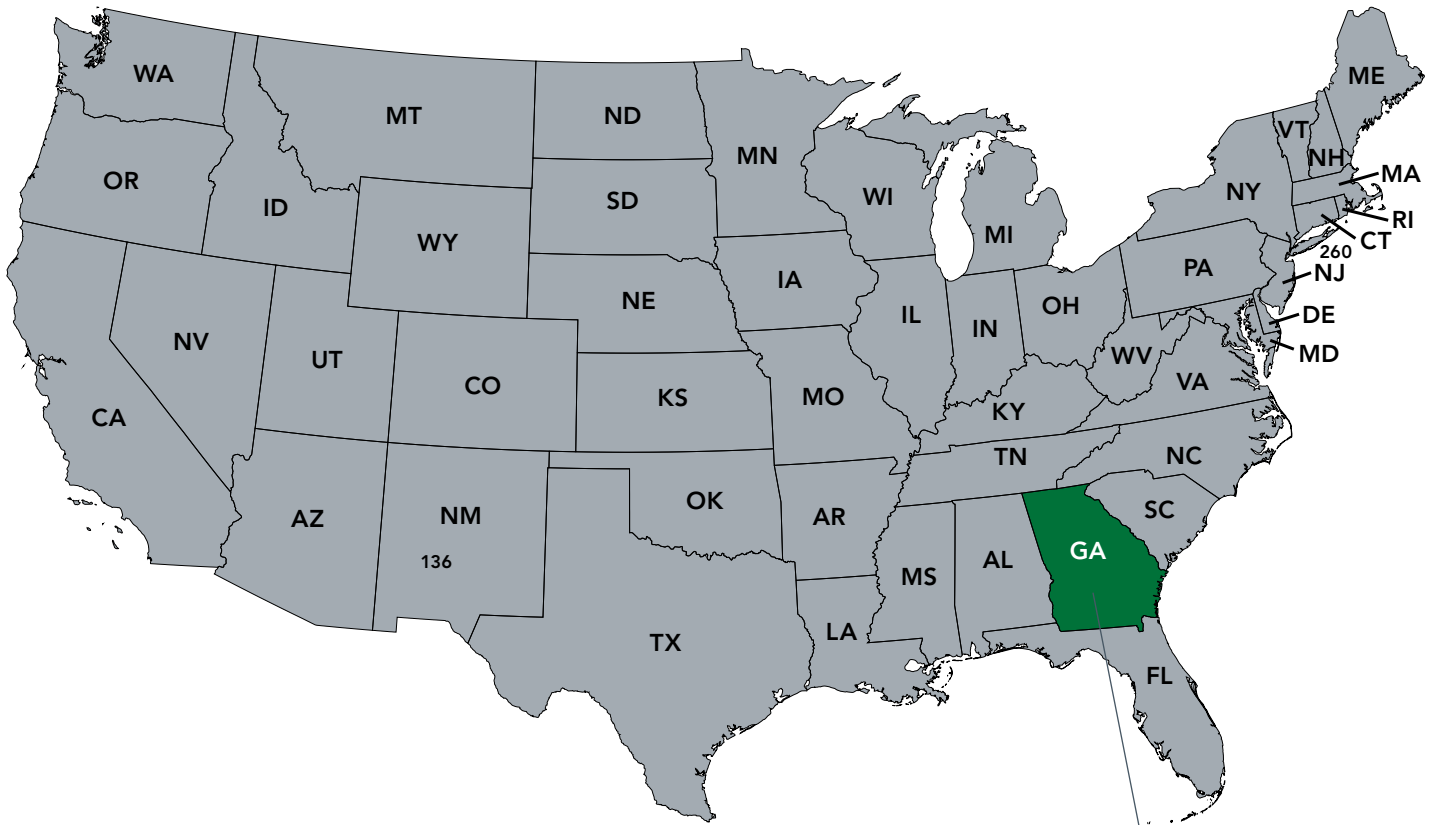
- 30 nLight ECLYPSE™ System Controller
nBRG 8 nLight Bridge- 8 Port

Commissioning Devices

- 31 nComKit Wired Commissioning Device

No Wait Will-Call

Your order will be picked and ready for you when you arrive.
Orders shipped within **24 hours** of entry.



Lighting Associates, Inc.
3600 Swiftwater Park Drive
Suwanee, GA 30024 Phone
(770) 448-9250

Quick Quote Contacts:

Brandon Cote
bcote@lightingassociates.com

Brett Hood
bhood@lightingassociates.com

Zack Davis
zdavis@lightingassociates.com



STACK Switch™ LED Center Element Lay-In by Lithonia Lighting®

Fully switchable LED center element lay-in. Three Adjustable Lumen Outputs (ALO) and three Switchable Color Temperatures (SWW) both conveniently located on the driver box. The modern aesthetic includes a wide, 7-inch curved lens which beautifully distributes the light, beveled end-plates to create a smooth transition from ceiling to light source, and less than 2 inches in total depth which makes it perfect for restricted plenum spaces.

Part No.	CI Code	UPC	Description	Lumens	Watts	Lumens	CCT
STAKS 2X2 ALO3 SWW7	*270PUL	00194995082056	STACK Switch Center Element Troffer, 2' x 2', 80 CRI, 3500K - 5000K, 3000-5000 Lumens, 0-10V dimming to 10%, 120V - 277V, 26 - 45 Watts, 123 - 140 LPW	Low Lumens	26.92	3,561	3500K
					26.18	3,683	4000K
					27.01	3,583	5000K
				Medium Lumens	34.23	4,371	3500K
					33.13	4,563	4000K
					34.22	4,375	5000K
				High Lumens	40.92	5,035	3500K
					39.41	5,297	4000K
					40.99	5,053	5000K
STAKS 2X4 ALO6 SWW7	*270PUM	00194995082063	STACK Switch Center Element Troffer, 2' x 4', 80 CRI, 3500K - 5000K, 4000-6000 Lumens, 0-10V dimming to 10%, 120V - 277V, 35 - 55 Watts, 127 - 146 LPW	Low Lumens	31.5	4,325	3500K
					30.61	4,470	4000K
					31.6	4,369	5000K
				Medium Lumens	40.09	5,310	3500K
					38.71	5,517	4000K
					40.26	5,357	5000K
				High Lumens	48.51	6,170	3500K
					46.6	6,492	4000K
					48.39	6,228	5000K



CPX LED Panel by Lithonia Lighting

CPX™ from Lithonia Lighting is the perfect choice for a quality LED panel at an affordable price. The smooth, even lens projects a crisp and clean aesthetic. CPX is the perfect choice for budget conscious school, commercial office, or small retail footprint projects.

Part No.	CI Code	UPC	Description	Lumens	Watts	Lumens	CCT
CPX 2X2 ALO7 SWW7 M4	*2628H5	00193048542806	CPX LED Panel, 2' x 2', >80 CRI, 3500K - 5000K, 3200-5000 Lumens, 0-10V dimming to 10%, 120V - 277V, 19-37 Watts, 110-138 LPW	Low Lumens	19.1	2,399	3500K
					18.5	2,570	4000K
					19.1	2,456	5000K
				Medium Lumens	28.7	3,356	3500K
					27.5	3,649	4000K
					28.5	3,427	5000K
				High Lumens	37.5	4,131	3500K
					35.8	4,564	4000K
					37.3	4,212	5000K
CPX 2X4 ALO8 SWW7 M2	*2628H6	00193048542844	CPX LED Panel, 2' x 4', >80 CRI, 3500K - 5000K, 4000-6000 Lumens, 0-10V dimming to 10%, 120V - 277V, 28-50 Watts, 124-143 LPW	Low Lumens	28.94	3,813	3500K
					28.1	4,033	4000K
					28.86	3,938	5000K
				Medium Lumens	36.8	4,677	3500K
					35.55	5,009	4000K
					36.65	4,834	5000K
				High Lumens	50.56	6,048	3500K
					48.53	6,563	4000K
					50.24	6,241	5000K



LDN LED Commercial Downlight by Lithonia Lighting®

LDN downlights are the most cost-effective general illumination solutions for commercial-grade downlight applications. The LDN4 and LDN6 designs allow for a quiet, glare-free ceiling without compromising on efficacy.

Part No.	CI Code	UPC	Description	Lumens	Watts	Lumens	CCT
LDN4 ALO2 SWW1 MVOLT UGZ HSG	*269VK8	00194994881117	LDN LED Commercial Round Downlight, 4", 80CRI, 3000K - 5000K, 1,000 - 2,000 Lumens, 0-10V dimming to 10%, 120V-277V, 12-25 Watts, 78-83 LPW	Low Lumens	12	1,000	3000K
					12	1,000	3500K
					12	1,000	4000K
					12	1,000	5000K
				Medium Lumens	19	1,500	3000K
					19	1,500	3500K
					19	1,500	4000K
					19	1,500	5000K
				High Lumens	25	2,000	3000K
					25	2,000	3500K
					25	2,000	4000K
					25	2,000	5000K
LDN6 ALO2 SWW1 MVOLT UGZ HSG	*269U7K	00194994869917	LDN LED Commercial Round Downlight, 6", 80CRI, 3000K - 5000K, 1,000 - 2,000 Lumens, 0-10V dimming to 10%, 120V-277V, 12-25 Watts, 78-83 LPW	Low Lumens	12	1,000	3000K
					12	1,000	3500K
					12	1,000	4000K
					12	1,000	5000K
				Medium Lumens	19	1,500	3000K
					19	1,500	3500K
					19	1,500	4000K
					19	1,500	5000K
				High Lumens	25	2,000	3000K
					25	2,000	3500K
					25	2,000	4000K
					25	2,000	5000K
LO4AR LSS TRIM	*239R3N	00745972691343	4" Open reflector with clear, semispecular finish				
LO6AR LSS TRIM	*239R45	00745972691619	6" Open reflector with clear, semispecular finish				



LBR Retrofit Downlight by Lithonia Lighting

LBR is everything you need in a downlight at an affordable price. Whether it's the seamless install from-below design, abundant energy savings or maintaining glare-free aesthetics, LBR is the perfect solution for any renovation, remodel or new construction project. To top it off, LBR has a broad offering of aperture sizes, drivers, accessories, and switchable CCTs and lumens.

Part No.	CI Code	UPC	Description	Lumens	Watts	Lumens	CCT
LBR6 ALO2 SWW1 AR LSS MWD MVOLT UGZ QDS	*269MUS	194994825081	LBR 6IN Round New Construction and Retrofit Housing, Switchable lumens – 1000LM, 1500LM, and 2000LM, Switchable CCT – 3000K, 3500K, 4000K, and 5000K, Clear, Semi-Specular, Medium Wide (1.0 s/mh), Multi-Volt, Universal Dimming to 10% 0-10V, Quick Disconnect Plugs	Low Lumens	13	1,000	3000K
					13	1,000	3500K
					13	1,000	4000K
					13	1,000	5000K
				Medium Lumens	19	1,500	3000K
					19	1,500	3500K
					19	1,500	4000K
					19	1,500	5000K
				High Lumens	25	2,000	3000K
					25	2,000	3500K
					25	2,000	4000K
					25	2,000	5000K
LBR6PFWQDS	*269L03	194994809951	LBR 6" Round Plaster Frame with J-box and 18" Conduit and Quick Disconnect				



Incandescent 6in Round New Construction Housing by Juno

The energy-efficient housing features an Air-Loc® seal to stop infiltration and exfiltration of air, reducing heating and cooling costs. The IC-rated housing can also be completely covered with insulation.

Part No.	CI Code	UPC	Description	Lamp Source	Socket	Voltage
IC23 W	*250AB5	661209068613	6IN Incandescent No Plate New Construction IC Hsg, Push-In Electrical Connectors	Incandescent	E26 Screw Shell	120V



E Series LED Baffle Retrofit Downlight by Juno

Experience the ultimate 5-in-1 solution with E Series Switchable White LED Trim Kits. Offering flexibility at your fingertips, E Series Trim Kits feature a switch, located directly on the fixture, that allows you to choose between 5 color temperature options ranging from 2700K (Warm White) to 5000K (Daylight). Available in both 4" and 5/6" sizes, E Series provides easy retrofitting from below the ceiling or can be paired with a Juno® Quick Connect QC Series recessed housing for new construction applications.

Part No.	CI Code	UPC	Description	Watts	Lumens	CCT
4BEMW SWW5 90CRI M6	*266XR2	194994160519	4IN Juno E Series Baffle Retrofit Downlight,Switchable CCT – 2700K, 3000K, 3500K, 4000K, and 5000K,90+ CRI,Master Pack of 6	8.6	700	2700K-5000K
65BEMW SWW5 90CRI M6	*266XRC	194994160564	6IN Juno E Series Baffle Retrofit Downlight,Switchable CCT – 2700K, 3000K, 3500K, 4000K, and 5000K,90+ CRI,Master Pack of 6	10.5	900	2700K-5000K
65BEMW HL SWW5 90CRI M6	*2678XY	194994244950	6IN Juno E Series Baffle Retrofit Downlight,High LM,Switchable CCT – 2700K, 3000K, 3500K, 4000K, and 5000K,90+ CRI,Master Pack of 6	14.5	1200	2700K-5000K



CSS LED Strip Light by Lithonia Lighting

The light-duty, dimmable, damp-location and DLC® listed CSS LED strip light can easily mount individually to a ceiling, horizontal and vertical wall, or by continuous row. The size and versatility makes it suitable for tight spaces, task lighting, restrooms, under/over cabinet and storage closets.

Part No.	CI Code	UPC	Description	Lumens	Watts	Lumens	CCT
CSS L48 ALO3 MVOLT SWW3 80CRI	*2659NY	00193048852677	CSS LED Strip Light, 48", 80 CRI, 3500K - 5000K, 3000-5000 Lumens, 0-10V dimming to 10%, 120V - 277V, 27-43 Watts, 115-120 LPW	Low Lumens	27.7	3,190	3500K
					27.7	3,247	4000K
					27.7	3,250	5000K
				Medium Lumens	35.8	4,135	3500K
					35.8	4,206	4000K
					35.8	4,268	5000K
				High Lumens	43.9	5,058	3500K
					43.9	5,150	4000K
					43.9	5,274	5000K
CSS L96 ALO4 MVOLT SWW3 80CRI	*2659P5	00193048852738	CSS LED Strip Light, 96", 80 CRI, 3500K - 5000K, 6000-10,000 Lumens, 0-10V dimming to 10%, 120V - 277V, 55-87 Watts, 115-120 LPW	Low Lumens	55.3	6,380	3500K
					55.3	6,495	4000K
					55.3	6,501	5000K
				Medium Lumens	71.7	8,271	3500K
					71.7	8,413	4000K
					71.7	8,535	5000K
				High Lumens	87.9	10,115	3500K
					87.9	10,300	4000K
					87.9	10,549	5000K



CSVT Vapor Tight Strip Light by Lithonia Lighting

These fully-gasketed, wet-location, and code-compliant vapor tights are IP65 and IP66 rated. They can be surface mounted on the ceiling or wall and are designed for continuous row mounting. The CSVT vapor tights are ideal for outdoor venues, canopies and locker rooms.

Part No.	CI Code	UPC	Description	Lumens	Watts	Lumens	CCT
CSVT L48 ALO3 MVOLT SWW3 80CRI	*270N96	00194995069507	CSVT Vapor Tight Strip Light, 48", 80 CRI, 3500K - 5000K, 3000-5,000 Lumens, 0-10V dimming to 10%, 120V - 277V, 24-42 Watts, 114-130 LPW	Low Lumens	24	3,019	3500K
					24	3,106	4000K
					24	3,141	5000K
				Medium Lumens	34	4,046	3500K
					34	4,163	4000K
					34	4,210	5000K
				High Lumens	42	4,806	3500K
					42	4,946	4000K
					42	5,001	5000K
CSVT L96 ALO4 MVOLT SWW3 80CRI	*270N92	00194995069446	CSVT Vapor Tight Strip Light, 96", 80 CRI, 3500K - 5000K, 6,000-10,000 Lumens, 0-10V dimming to 10%, 120V - 277V, 49-84 Watts, 117-128 LPW	Low Lumens	49	6,038	3500K
					49	6,213	4000K
					49	6,283	5000K
				Medium Lumens	49	8,092	3500K
					68	8,326	4000K
					68	8,420	5000K
				High Lumens	84	9,613	3500K
					84	9,891	4000K
					84	10,003	5000K



CPHB Compact Pro™ LED High Bay by Lithonia Lighting

The Compact Pro High Bay by Lithonia Lighting is the budget-oriented high bay designed for contractors from the ground up. It's the most compact high bay on the market, making it easier and quicker to install. Built with quality to last and performance to get the job done.

Part No.	CI Code	UPC	Description	Watts	Lumens	CCT
CPHB 12LM MVOLT 40K	*268SAH	00194994608325	CPHB Compact Pro™ LED High Bay, 14", 80 CRI, 4000K, 12,000 Lumens, 0-10V dimming to 10%, 120V-277V, 88 Watts, 139 LPW	88	12,261	4000K
CPHB 18LM MVOLT 40K	*268SAJ	00194994608295	CPHB Compact Pro™ LED High Bay, 22", 80 CRI, 4000K, 18,000 Lumens, 0-10V dimming to 10%, 120V-277V, 134 Watts, 137 LPW	134	18,364	4000K
CPHB 18LM MVOLT 50K	*2681J9	00194994429630	CPHB Compact Pro™ LED High Bay, 22", 80 CRI, 5000K, 18,000 Lumens, 0-10V dimming to 10%, 120V-277V, 134 Watts, 137 LPW	134	18,485	5000K
CPHB 24LM MVOLT 40K	*2681JE	00194994429685	CPHB Compact Pro™ LED High Bay, 22", 80 CRI, 4000K, 24,000 Lumens, 0-10V dimming to 10%, 120V-277V, 174 Watts, 143 LPW	174	24,890	4000K
CPHB 24LM MVOLT 50K	*2681JL	00194994429753	CPHB Compact Pro™ LED High Bay, 22", 80 CRI, 5000K, 24,000 Lumens, 0-10V dimming to 10%, 120V-277V, 174 Watts, 143 LPW	174	25,054	5000K



CPRB Compact Pro™ LED Round High Bay by Lithonia Lighting

The Compact Pro™ Round High Bay by Lithonia Lighting is the newest innovation in the Compact Pro Family. The CPRB features two patent-pending elements; the tri-radial glare-control lens creates an even, brilliant light ideal for most lighting needs and the integrated folding hook provides simple and secure installation. And with a lightweight, compact, and simple design, the CPRB requires only one person to install, cutting down on labor costs and helping protect your budget.

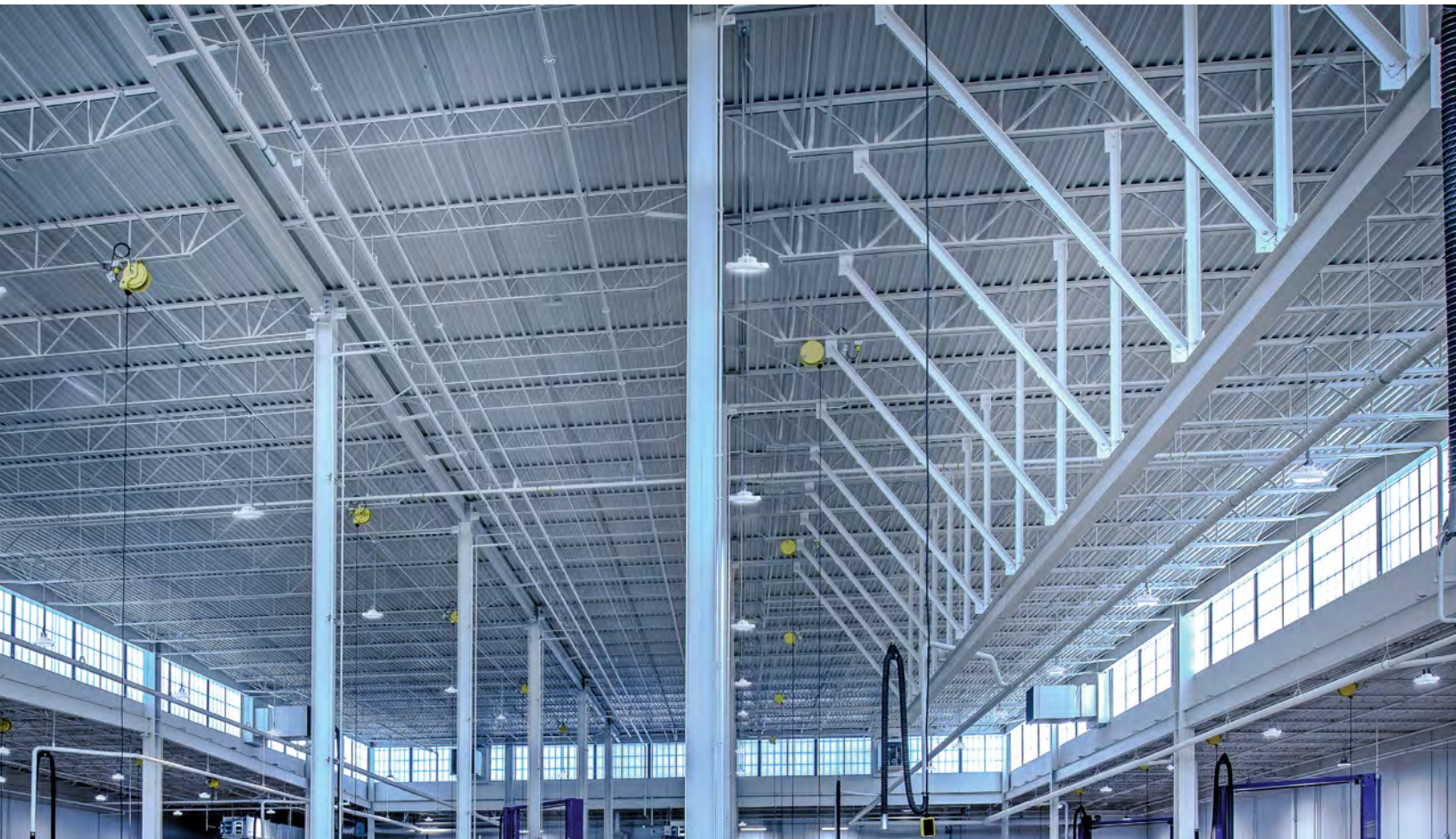
Part No.	CI Code	UPC	Description	Lumens	Watts	Lumens	CCT
CPRB ALO13 UVOLT SWW9 80CRI DWH	*27788P	00196182615023	CPRB Compact Pro LED Round High Bay, 80 CRI, 4000K - 5,000K, 12,000 - 18,000 Lumens, 0-10V dimming to 10%, 120V-277V, 83-132 Watts, 136-144 LPW, White	Low Lumens	83	12,000	4000K
					83	12,000	5000K
				Medium Lumens	106	15,000	4000K
					106	15,000	5000K
				High Lumens	132	18,000	4000K
					132	18,000	5000K
CPRB ALO13 UVOLT SWW9 80CRI DBL	*27788R	00196182615054	CPRB Compact Pro LED Round High Bay, 80 CRI, 4000K - 5,000K, 12,000 - 18,000 Lumens, 0-10V dimming to 10%, 120V-277V, 83-132 Watts, 136-144 LPW, Black	Low Lumens	83	12,000	4000K
					83	12,000	5000K
				Medium Lumens	106	15,000	4000K
					106	15,000	5000K
				High Lumens	132	18,000	4000K
					132	18,000	5000K
CPRB ALO14 UVOLT SWW9 80CRI DWH	*27788T	00196182615061	CPRB Compact Pro LED Round High Bay, 80 CRI, 4000K - 5,000K, 21,000 - 27,000 Lumens, 0-10V dimming to 10%, 120V-277V, 148-195 Watts, 137-141 LPW, White	Low Lumens	148	21,000	4000K
					148	21,000	5000K
				Medium Lumens	175	24,000	4000K
					175	24,000	5000K
				High Lumens	195	27,000	4000K
					195	27,000	5000K
CPRB ALO14 UVOLT SWW9 80CRI DBL	*27788U	00196182615078	CPRB Compact Pro LED Round High Bay, 80 CRI, 4000K - 5,000K, 21,000 - 27,000 Lumens, 0-10V dimming to 10%, 120V-277V, 148-195 Watts, 137-141 LPW, Black	Low Lumens	148	21,000	4000K
					148	21,000	5000K
				Medium Lumens	175	24,000	4000K
					175	24,000	5000K
				High Lumens	195	27,000	4000K
					195	27,000	5000K



JEBL LED High Bay by Lithonia Lighting

The JEBL is built to last with 6kV surge protection standard, 55°C ambient temperature rating and IP65 rated for elimination of dust, moisture and airborne contaminants. The unique, quick-connect, driver-to-optical assembly interface allows for quick and easy maintenance for applications including warehousing, gymnasiums, manufacturing and outdoor canopies.

Part No.	CI Code	UPC	Description	Watts	Lumens	CCT
JEBL 18L 40K 80CRI WH	*2501PP	00191848153895	JEBL LED High Bay, 80 CRI, 4000K, 18,000 Lumens, 0-10V dimming to 10%, 120V-277V, 135 Watts, 142 LPW, White	135	19,303	4000K
JEBL 24L 40K 80CRI WH	*2501PS	00191848153918	JEBL LED High Bay, 80 CRI, 4000K, 24,000 Lumens, 0-10V dimming to 10%, 120V-277V, 174 Watts, 138 LPW, White	174	24,181	4000K





ERE Emergency Remote Light Head by Lithonia Lighting

The Lithonia Lighting ERE LED Remotes are suitable for indoor and outdoor emergency lighting applications illuminating the path of egress. These remotes are available with single or twin fully adjustable LED lamps and are suitable for wall or ceiling mounting.

Part No.	CI Code	UPC	Description
ERE GY T WP SQ M12	*263X5E	00191848036815	ERE Emergency Remote Light Head, Square Twin Lampheads, Weatherproof, Gray



WLTU LED Emergency Light by Lithonia Lighting

The Lithonia Lighting WLTU LED is ideal for wet location areas requiring emergency lighting that are subject to saturation with non-mechanically delivered water. Its contemporary designed polycarbonate housing is impact-resistant, scratch resistant and corrosion-proof.

Part No.	CI Code	UPC	Description
WLTU LED	*215NWL	00753573613800	WLTU LED Emergency light with 1.9W, 9.6V LED lamp heads and 3.7 watts remote capacity



EU2C Dual LED Lamp Head Emergency Light by Lithonia Lighting

The Lithonia Lighting EU2C Emergency Light is suitable for emergency lighting applications such as stairways and hallways. It's dual LED lamp heads makes the EU2C ideal for safely illuminating the path of egress in small spaces at lower mounting heights. It can be wall mounted and will provide 90 minutes of emergency power in the case of power loss.

Part No.	CI Code	UPC	Description
EU2C M6	*263X65	00191848037188	EU2C Dual LED Lamp Head Emergency Light, white



ECRG Emergency Combo Unit by Lithonia Lighting

The Lithonia Lighting ECRG, is a combination of exit and emergency lighting. The ECRG is ideal for safely illuminating the path of egress above-the-door in small spaces at lower mounting heights while providing 90 minutes of emergency power. Available in red and green letters.

Part No.	CI Code	UPC	Description
ECRG RD M6	*269XWV	00194994900412	ECRG Red/Green LED Exit/Unit Combo, Round Lamp Heads
ECRG SQ M6	*269XW7	00194994900467	ECRG Red/Green LED Exit/Unit Combo, Square Lamp Heads



EXRG Emergency Exit Sign by Lithonia Lighting

The Lithonia Lighting Basics™ EXRG Exit Sign is suitable for emergency signage applications such as stairways and hallways. This fully assembled single-face exit with extra faceplate is available in red and green letters. It's low profile makes it ideal for safely illuminating the path of egress in small spaces and can be wall or ceiling mounted. The emergency power provides 90 minutes of illumination in the event of a power loss.

Part No.	CI Code	UPC	Description
EXRG EL M6	*269XX0	00194994900696	EXRG Red/Green Exit with Ni-MH backup battery





Drywall Grid Adapter by Lithonia Lighting

Installing a DGA in a drywall ceiling will provide a frame (grid) onto which you can lay-in any NEMA Type "G" troffer. Flange kits and flange trim kit are not required when a fixture is installed into a DGA.

Part No.	CI Code	UPC	Description
DGA22	*497790	784231093818	Dry-Wall Grid Adaptor, 2x2
DGA24	*484328	784231089217	Dry-Wall Grid Adaptor, 2x4



ESX1 LED Area Luminaire by Lithonia Lighting

The ESX LED area luminaire provides the combination of best product, best price and best delivery. ESX is ideal for one-for-one replacement of HID area lighting and provides up to 76% energy savings, long service life and fast payback. The ESX1 delivers 8,000 to 25,000 lumens allowing it to replace 150W to 400W HID luminaires. All ESX luminaires feature adjustable light output, providing two light levels from one product, allowing greater flexibility in the field. All luminaires feature a reversible arm that allows for mounting on both round and square poles.

Part No.	CI Code	UPC	Description	Lumens	Watts	Lumens	CCT
ESX1 LED P2 40K R3 MVOLT UPA BLS DDBXD M2	*269PG3	00194994838302	ESX1 LED Area, 4,000K-5,000K, 8,000 - 14,000 Lumens, 120V-277V, 50-98 Watts, 142-160 LPW, Dark Bronze	Low Lumens	50	8,000	4000K
					50	8,000	5000K
				High Lumens	98	14,000	4000K
					98	14,000	5000K
ESX1 LED P4 40K R3 MVOLT UPA BLS DDBXD M2	*269PG8	00194994838340	ESX1 LED Area, 4,000K-5,000K, 21,000 - 25,000 Lumens, 120V-277V, 146-190 Watts, 131-143 LPW, Dark Bronze	Low Lumens	146	21,000	4000K
					146	21,000	5000K
				High Lumens	190	25,000	4000K
					190	25,000	5000K





ESXF LED Floodlight by Lithonia Lighting

The Lithonia Lighting® ESXF LED floodlight is a general-purpose flood that offers a wide selection of options and flexibility. Easy access to adjustable lumen output, color switching, and a selectable photocell turns the ESXF into the fixture you need on the spot. With its wide flood (7x7) distribution and DLC performance, the ESXF is a cost-effective solution, great for illuminating yards, driveways, signage, patios, warehouses, and security applications.

Part No.	CI Code	UPC	Description	Lumens	Watts	Lumens	CCT
ESXF1 ALO SWW2 KY DDB M2	*276ALH	00196182393204	ESXF LED Floodlight, Size 1, 80CRI, 3,000K-5,000K, 1,500 - 5,000 Lumens, 120V-277V, 9-34 Watts, 139-173 LPW, Dark Bronze	Low Lumens	9	1,467	3000K
					9	1,560	4000K
					9	1,549	5000K
				Medium Lumens	19	2,915	3000K
					19	3,099	4000K
					19	3,076	5000K
				High Lumens	34	4,748	3000K
					34	5,047	4000K
					34	5,010	5000K
ESXF2 ALO SWW2 KY DDB M2	*276ALU	00196182393242	ESXF LED Floodlight, Size 2, 80CRI, 3,000K-5,000K, 3,500 - 7,500 Lumens, 120V-277V, 22-56 Watts, 136-163 LPW, Dark Bronze	Low Lumens	22	3,377	3000K
					22	3,591	4000K
					22	3,564	5000K
				Medium Lumens	37	5,315	3000K
					37	5,651	4000K
					37	5,609	5000K
				High Lumens	56	7,223	3000K
					56	7,680	4000K
					56	7,623	5000K
ESXF3 ALO SWW2 YS DDB M2	*276ALW	00196182393266	ESXF LED Floodlight, Size 3, 80CRI, 3,000K-5,000K, 8,500 - 14,000 Lumens, 120V-277V, 53-100 Watts, 136-163 LPW, Dark Bronze	Low Lumens	53	8,139	3000K
					53	8,653	4000K
					53	8,589	5000K
				Medium Lumens	69	10,156	3000K
					69	10,797	4000K
					69	10,718	5000K
				High Lumens	100	13,609	3000K
					100	14,469	4000K
					100	14,362	5000K
ESXF4 ALO SWW2 YS DDB M2	*276AM2	00196182393280	ESXF LED Floodlight, Size 4, 80CRI, 3,000K-5,000K, 16,000 - 20,000 Lumens, 120V-277V, 111-150 Watts, 130-148 LPW, Dark Bronze	Low Lumens	111	15,508	3000K
					111	16,487	4000K
					111	16,366	5000K
				Medium Lumens	124	17,274	3000K
					124	18,365	4000K
					124	1,823	5000K
				High Lumens	150	19,583	3000K
					150	20,819	4000K
					150	20,666	5000K



TWX LED Adjustable Light Output Wallpack by Lithonia Lighting

The TWX LED wall pack family is an industry-leading distributor stock solution featuring a ground-up design with a low initial cost customers demand while providing superior performance in a traditional form. The TWX LED wall packs feature premium borosilicate glass lenses, while the TWPX LED wall packs feature vandal-resistant polycarbonate lenses, both working in conjunction with the high-efficiency light engine to provide superior illumination while minimizing wasted up-light. The new slim design creates a less obtrusive appearance on the building while still fully covering the unsightly stains leftover from typical HID glass wall packs. The Adjustable Light Output (ALO) option maximizes flexibility both in the field and on distributor shelves.

Part No.	CI Code	UPC	Description	Watts	Lumens	CCT
TWX2 LED ALO 40K MVOLT DDBTXD	*268TUM	00194994620488	TWX LED WallPack, Size 2, 4,000K, 1,450 - 6,950 Lumens, 120V-277V, 54 Watts, 26-128 LPW, Textured Dark Bronze	54	1,450 - 6,950	4000K
TWX3 LED ALO 40K MVOLT DDBTXD	*269PG8	00194994838340	TWX LED WallPack, Size 3, 4,000K, 2,900 - 13,850 Lumens, 120V-277V, 54 Watts, 26-128 LPW, Textured Dark Bronze	108	2,900 - 13,850	4000K



TWR LED Adjustable, Switchable, Photocell Wallpack by Lithonia Lighting

The Lithonia Lighting® TWR wall packs combine the power of the latest generation of LEDs in a popular and classic day-form to provide exceptional energy savings. These wall packs give ultimate versatility to both the distributor and contractor by offering 18 configurations in one product with their standard Adjustable Lumen Output (ALO), Switchable color temperature (SWW2), and adjustable photocell (PE) features.

Part No.	CI Code	UPC	Description	Watts	Lumens	CCT
TWR1 LED ALO SWW2 UVOLT PE DDBTXD	*280GWW	196183389947	Small glass refractor wall pack,LED,Up to 8500 lumens,Switchable CCT- 3000K, 4000K, and 5000K,120-347V,Photocell, buttontype,Textured dark bronze, super durable	16 - 59	2,300 - 8,500	3000K, 4000K, 5000K
TWR2 LED ALO SWW2 UVOLT PE DDBTXD	*280GX5	196183390028	TWR2V,LED,Up to 16100 lumens,Switchable CCT- 3000K, 4000K, and 5000K,120-347V,Photocell, buttontype,Textured dark bronze, super durable	55 - 112	8,200 - 16,100	3000K, 4000K, 5000K



WPX0 LED Wall Mount by Lithonia Lighting

The WPX LED wall packs are energy-efficient, cost-effective, and aesthetically appealing solutions for both HID wall pack replacement and new construction opportunities. Available in four sizes, the WPX family delivers 850 to 9,200 lumens with a wide, uniform distribution. The WPX0 full cut-off wall pack is an excellent above the door lighting solution. Reliable IP66 construction and excellent LED lumen maintenance ensure a long service life. Standard features such as Adjustable Lumen Output (ALO), color switching and switchable photocell make WPX0 ideal for any application.

Part No.	CI Code	UPC	Description	Lumens	Watts	Lumens	CCT
WPX0 LED ALO SWW2 MVOLT PE DDBXD M2	*276U4U	00196182511806	WPX0 LED Wall Mount, 3,000K-5,000K, 850 - 1650 Lumens, 120V-277V, 6.4-13 Watts, 62-260 LPW, Dark Bronze	ALO 1	6.4	1,591	3000K
					6.4	1,644	4000K
					6.4	1,667	5000K
				ALO 2	7.8	1,164	3000K
					7.8	1,191	4000K
					7.8	1,225	5000K
				ALO 3	9.2	974	3000K
					9.2	994	4000K
					9.2	1,025	5000K
				ALO 4	13	814	3000K
					13	829	4000K
					13	859	5000K



CNY LED Canopy Lighting by Lithonia Lighting

The CNY LED canopy luminaires are versatile, energy-efficient solutions for surface-mount applications. Available in two sizes, these luminaires can replace a wide range of existing canopy luminaires; anything from CFL to 400W metal halide. An LED array light source coupled with a translucent polycarbonate lens creates visually comfortable illumination that is far superior to similar products that use a single bright LED and clear lenses. Smooth sides greatly enhance the aesthetic of this product making it suitable for a wider range of applications than industrial-looking finned products.

Part No.	CI Code	UPC	Description	Watts	Lumens	CCT
CNY LED P1 40K MVOLT DDB M4	*249XPY	00191848093320	CNY LED Canopy, 4,000K, 4,500 Lumens, 120V-277V, 35 Watts, 128 LPW, Dark Bronze	35	4,500	4000K
CNY LED P2 40K MVOLT DDB M4	*249XR1	00191848093344	CNY LED Canopy, 4,000K, 6,600 Lumens, 120V-277V, 52 Watts, 115 LPW, Dark Bronze	52	6,000	5000K



WSXA Series Wall Switch by SensorSwitch

The WSXA Series is ideal for commercial indoor spaces that require occupancy detection for both large (36ft) and small motion (20ft) making it the ideal choice for private offices, conference rooms, restrooms and breakrooms. Device includes a vandal resistant lens and matching wall plate.

Part No.	CI Code	Description
WSXA WH	*268UHA	WSXA Wall Switch Sensor, Passive Infrared (PIR), On/Off, Automatic on (default) or Vacancy, 120-277 VAC, Standard Temp/Humidity, White
WSXA PDT WH	*268UH8	WSXA Wall Switch Sensor, Dual Technology, On/Off, Automatic on (default) or Vacancy, 120-277 VAC, Standard Temp/Humidity, White
WSXA MWO PDT D WH	*2682H0	WSXA Wall Switch Sensor with Multi-way Operation, Dual Technology, Dimming, Automatic on (default) or Vacancy, 120-277 VAC, 10 VDC Max Dim Level, 0 VDC Min Dim Level, Standard Temp/Humidity, White
WSXA MWO PDT D IV	*2716XF	WSXA Wall Switch Sensor with Multi-way Operation, Dual Technology, Dimming, Automatic on (default) or Vacancy, 120-277 VAC, 10 VDC Max Dim Level, 0 VDC Min Dim Level, Standard Temp/Humidity, Ivory
WSXA MWO PDT D GY	*273TC3	WSXA Wall Switch Sensor with Multi-way Operation, Dual Technology, Dimming, Automatic on (default) or Vacancy, 120-277 VAC, 10 VDC Max Dim Level, 0 VDC Min Dim Level, Standard Temp/Humidity, Gray



sPODMA Wall Switch by SensorSwitch

The sPODMA push-button switch is a low voltage wall station interface with standard SensorSwitch occupancy sensor and power packs to implement a wide range of single and bi-level switching applications. And now in a new aesthetic with a screwless wallplate.

Part No.	CI Code	Description
sPODMA WH	*268UHA	sPODMA Wall Switch, 1 Switch / Auto On, Standard Temp/Humidity, White
sPODMA SA WH	*268UH8	sPODMA Wall Switch, 1 Switch / Manual On, Standard Temp/Humidity, White
sPODMA 3X WH	*2682H0	sPODMA Wall Switch, 1 Switch / Auto On, Multi-Way, Standard Temp/Humidity, White
sPODMA SA 3X WH	*2716XF	sPODMA Wall Switch, 1 Switch / Manual On, Multi-Way, Standard Temp/Humidity, White
sPODMA D SA WH	*273TC3	sPODMA Wall Switch, Dimming, 1 Switch / Manual On, Standard Temp/Humidity, White
sPODMA D SA 3X WH	*2718YP	sPODMA Wall Switch, Dimming, 1 Switch / Manual On, Multi-Way, Standard Temp/Humidity, White



SPODMRA Series Dimming Switch by SensorSwitch

The SensorSwitch sPODMRA Series is a push-button dimming switch with a multi-way option (MWO), this cost-effective solution allows you to control fixtures with 0-10V dimming from up to 9 different locations in a room using a communication traveler wire.

Part No.	CI Code	Description
sPODMRA MWO D WH	*269HG6	sPODMRA Switchpod with Multi-way (3-Way) Operation, Dimming, 120-277 VAC, 10 VDC Max Dim Level, 0 VDC Min Dim Level, White



nWSXA Low-Voltage Wall Switch Sensor by nLight®

The nLight nWSXA is a low voltage wall switch with integrated sensors providing local control of lighting zones featuring toggle and/or raise lower. The sleek, modern design of the nWSXA enhances the aesthetic of a space while offering occupancy and/or daylighting. Capable of detecting small motion up to 20 ft (6.10 m), this sensor is ideal for private offices, private rest rooms, copy rooms, closets or any small enclosed spaces. For occupancy sensing, the nWSXA uses Passive Infrared (PIR) detection and PIR/Microphonics Dual Technology (PDT).

Part No.	CI Code	Description
nWSXA PDT LV WH	*268L9A	nWSXA, Passive Infrared (PIR), Low Voltage, Standard Temp / Humidity, White
nWSXA PDT LV DX WH	*267X37	nWSXA, Passive Infrared (PIR), Low Voltage, Raise/Lower Dim Control, Standard Temp / Humidity, White



rPOD Micro AIR Battery-Powered Wall Switch by nLight®

The nLight AIR rPOD Micro is a battery-powered wall switch that maximizes control via an ultra-thin, modern design and industry-leading range. Available as a WallPod or Remote and designed to mount to wall surfaces without a wall plate or to its custom podium, the rPOD Micro installs quickly and easily, providing control from anywhere in a variety of indoor spaces.

Part No.	CI Code	Description
RPODU DX NMO WH G2 J5	*280HAU	nLight Air rPOD Micro Switch, Raise/Lower Dimming, Surface Mount, No Wall Box/Plate, White, Generation Two, Job pack of 5
RPODU DX WH G2	*2810JY	nLight Air rPOD Micro Switch, Raise/Lower Dimming, White, Generation Two
RPODU WH G2	*2810K1	nLight Air rPOD Micro Switch, White, Generation Two



CM Ceiling mount, Low Voltage Sensor by SensorSwitch

The CM is a low voltage sensor that easily mounts directly to a ceiling tile or a metallic grid. Ceiling mount sensors are offered in a multitude of configurations which address many applications. Lens options include large motion extended range, small motion standard range and bi-directional for hallways. Multiple low voltage sensors can work together to supply the ideal solution for oddly shaped rooms or large open office areas. For rooms with obstructions, these sensors are also offered with Dual Technology, which adds Microphonics™ detection to the Passive Infrared (PIR) detection.

Part No.	CI Code	Description
CM 9 WH	*184CGW	CM Ceiling Mount Sensor, Passive Infrared (PIR), Small Motion 360, Standard Temp / Humidity, White
CM PDT 10 WH	*184CGY	CM Ceiling Mount Sensor, Dual Technology (PIR/Microphonics), Large Motion 360, Standard Temp / Humidity, White
CM PDT 10 R WH	*184EYW	CM Ceiling Mount Sensor, Dual Technology (PIR/Microphonics), Large Motion 360, Low Voltage Relay, Standard Temp / Humidity, White



CMR Ceiling Mount Occupancy Sensor by SensorSwitch

The CMR is a line voltage sensor that easily mounts directly to a ceiling. Lens options include large motion extended range and small motion standard range. These sensors are capable of covering an entire private office or small room by themselves. A line voltage sensor provides one relay for a single-level control. For rooms with obstructions, these sensors are also offered with Dual Technology, which adds Microphonics™ detection to the Passive Infrared (PIR) detection.

Part No.	CI Code	Description
CMR 9 WH	*184CH2	CMR Ceiling Mount Sensor, Passive Infrared (PIR), Small Motion 360, 120/230/277 VAC, Standard Temp / Humidity, White
CMR PDT 9 WH	*184CHA	CMR Ceiling Mount Sensor, Dual Technology (PIR/Microphonics), Small Motion 360, 120/230/277 VAC, Standard Temp / Humidity, White
CMR 10 WH	*184CH0	CMR Ceiling Mount Sensor, Passive Infrared (PIR), Large Motion 360, 120/230/277 VAC, Standard Temp / Humidity, White



LSXR Fixture Mount Occupancy Sensor by SensorSwitch

The LSXR Family of fixture mount occupancy sensors provides reliable and versatile solutions for commercial and industrial lighting control applications. All LSXR Family sensors utilize passive infrared (PIR) detection and feature interchangeable lenses, providing flexibility for multiple mounting height and coverage pattern requirements. All LSXR Family sensors utilize 100% digital Passive Infrared (PIR) detection and power from / switch line voltage. Available options include dual relays, HVOLT powering, and an integrated switching / dimming photocell.

Part No.	Description
LSXR 610	LSXR Passive Infrared (PIR) Indoor Occupancy Sensor, High and Low Mount 360, 120-277 VAC, 8" Lead Length, 10 Minute Default Time Delay w/ 15 Minute Minimum On Time



nCM 10 RJB Ceiling Mount Occupancy & Daylight Sensor by nLight

The nCM 10 RJB family of nLight ceiling/surface mount occupancy sensors provide a range of networked sensor solutions for applications with finished ceilings (e.g. ceiling tiles, sheetrock, plaster). nCM 10 RJB family sensors utilize 100% digital Passive Infrared (PIR) detection and are available with several lens options, providing flexibility for multiple mounting height and coverage pattern requirements. Dual technology occupancy detection can also be added as an option for applications where occupants are stationary for long periods of time. nCM 10 RJB family sensors are also available with an optional auxiliary low voltage relay for simple integration with a BMS system or other building system.

Part No.	CI Code	Description
nCM PDT 10 AR RJB	*231WMM	nCM, Dual Technology (PIR/Microphonics), Large Motion 360, Low Voltage Aux. Relay, Rear RJ45 (CAT5e Patch Cable & RJ45 Splitter Included)
nCM PDT 10 RJB	*230CEP	"nCM, Dual Technology (PIR/Microphonics), Large Motion 360, Rear RJ45 (CAT5e Patch Cable & RJ45 Splitter Included)
nCM 10 AR RJB	*230CEU	nCM, Passive Infrared (PIR), Large Motion 360, Low Voltage Aux. Relay, Rear RJ45 (CAT5e Patch Cable & RJ45 Splitter Included)
nCM 10 RJB	*229Y2N	nCM, Passive Infrared (PIR), Large Motion 360, Rear RJ45 (CAT5e Patch Cable & RJ45 Splitter Included)



nCM ADCX RJB Ceiling Mount Daylight Sensor by nLight

The nCM ADCX RJB photocell sensors are ceiling/surface mount devices that provide a range of daylight harvesting features for nLight Control System installations with finished ceilings (e.g. ceiling tiles, sheetrock, plaster). The nCM PC RJB provides on/off photocell control by default. Ideal for spaces with windows, such as vestibules, corridors, classrooms, or offices, these sensors work by first monitoring daylight conditions in a room. They then signal networked nLight control devices to adjust their dimming outputs (and/or turn lighting off) to obtain maximum energy savings while ensuring adequate lighting levels are maintained.

Part No.	CI Code	Description
nCM ADCX RJB	*230CEY	nCM, Automatic Dimming Control Photocell, Single Zone Control, Standard Temp / Humidity, Rear RJ45 (CAT5e patch cable & RJ45 splitter included)



rCMSB nLight AIR Battery-Powered Ceiling Mount Sensor by nLight

The rCMSB is a wireless battery-powered ceiling mount sensor for retrofit or new construction projects that has no wires to install; simply mount it to the ceiling, program with the mobile app, and you're done. The rCMSB has the PIR motion sensing and daylight harvesting as standard features and now offers the optional passive dual technology (PDT), all-in-one device. PDT combines PIR and Microphonics™ to deliver a higher level of detection to see and hear an occupant in the space.

Part No.	CI Code	Description
rCMSB PDT 7 G2	*265XJF	RCMSB nLight AIR Occupancy and Daylight Sensor, Dual Technology (PIR/Microphonics), Low Mount 360, Surface Mount, Gen 2 compatible
rCMSB 7 G2	*265XJ6	RCMSB Sensor, Passive Infrared (PIR), Low Mount 360, Surface Mount, Gen 2 compatible



PP20 Power Pack by SensorSwitch

Power packs are the heart of the low voltage sensor system. The PP20 transforms 120, 240 or 277 Volts to Class II 15 VDC to power the remote sensors. Utilizing our Patented Relay Circuit Protection, the PP20 also switches the lighting load On and Off. This method has been tested to over 400,000 cycles at rated load! The elongated mounting nipple allows for the PP20 to be mounted either directly through a 1/2-inch knockout into a junction box, or located inside an adjacent box for specific local code requirements. Up to 14 sensors may be connected to one PP20. A PP20 power pack can be wired continuously hot (line side), or on the switch leg (load side) without nuisance delays upon turn on.

Part No.	CI Code	Description
PP20	*184CHH	PP20 Power / Relay Pack, Single Pole, 120/277 VAC, Standard Temp / Humidity



nPP16 Power Relay Pack by nLight

The nLight nPP16 Series power pack is the workhorse of an nLight system. Each unit has two important responsibilities: providing system power and switching lighting loads. To provide system power, the power pack transforms Class 1 line voltage (120/277 VAC or 347 VAC) to Class 2 15 VDC. For switching a lighting load, an internal 16A latching relay is used.

Part No.	CI Code	Description
nPP16 EFP	*265LYP	nPP16 Power/Relay Pack, External Fault Protection, Auto On, 120/277 VAC, Standard Temp / Humidity
nPP16 D EFP	*265LYJ	nPP16 Power/Relay Pack, 0-10VDC Dimming output, External Fault Protection, Auto On, 120/277 VAC, Standard Temp / Humidity



nPP16 ER Emergency Relay Pack by nLight

The nLight nPP16 ER Series relay pack is used to switch luminaires powered via an emergency circuit. Ideal for use along side a standard nPP16 relay pack that controls a zone's normal powered lighting, the nPP16 ER is designed to switch up to 16 Amps of lighting load.

Part No.	CI Code	Description
nPP16 D ER EFP	*265LYK	nPP16 Power/Relay Pack, 0-10VDC Dimming output, UL924 Emergency Operation, External Fault Protection, Auto On, 120/277 VAC, Standard Temp / Humidity
nPP16 ER EFP	*253CRH	nPP16 Power/Relay Pack, UL924 Emergency Operation, External Fault Protection, Auto On, 120/277 VAC, Standard Temp / Humidity



nPP20 PL Plug Load Control Power Pack by nLight

The nLight nPP20 PL power pack extends the power pack family, delivering robust system performance and design versatility for commercial and industrial control applications. The nPP20 PL is capable of switching loads up to 20 Amps for general purpose receptacle load via an internal latching relay designed with robust protection.

Part No.	CI Code	Description
nPP20 PL	*233C81	nPP20 PL Plug Load Control Power Pack, Self-powers only, Standard Temp / Humidity



rPP20 nLight AIR Power Relay Pack by nLight

The nLight AIR rPP family of power packs are lighting control devices designed to offer flexible control for commercial and industrial lighting applications. The rPP20 consists of a relay, 0-10V dimming control, and a low voltage power supply output to power and wireless switches and sensors. The rPP20 is capable of switching loads up to 20A via a latching relay designed with robust inrush protection from the harsh switching requirements of fluorescent and LED loads. Select power packs provide +24VDC low voltage output to power up to 4 nLight AIR mounted occupancy sensors and photocells.

Part No.	CI Code	Description
rPP20 EFP G2	*2583HH	rPP20 nLight AIR Power/Relay Pack, External Fault Protection, 120-277 VAC, Gen 2 compatible
rPP20 D EFP G2	*2583HK	rPP20 nLight AIR Power/Relay Pack, 0-10VDC Dimming output, no 24V Output Terminals, External Fault Protection, 120-277 VAC, Gen 2 compatible



ARP Relay Panel by nLight

The nLight Relay Panel family delivers cost-effective 0-10V dimming and switching with the optional Field Configurable Relay for your building design needs. Smart and simple switching and dimming, the nLight Relay Panel communicates with an nLight network and supports up to 128 digital devices per nLight control zone. Offering a full range of panel sizes, the nLight Relay Panel is ideal for spaces that require full circuit control, with the optional flexibility of configuring single pole relays into a two or three-pole relays in the field.

Part No.	CI Code	Description
ARP INTENC08 NLT 8FCR MVOLT SC SM DTC	*2653XA	ARP Relay Panel, 8-Relay Enclosure, 8-Field Configurable Relays, 120-277 VAC, No Barriers, Screw Cover, Surface Mount, Digital Time Clock
ARP INTENC16 NLT 16FCR MVOLT SC SM DTC	*2653X6	ARP Relay Panel, 16-Relay Enclosure, 16-Field Configurable Relays, 120-277 VAC, No Barriers, Screw Cover, Surface Mount, Digital Time Clock
ARPA APS OL	*272VPL	ARP Accessory, Analog Photosensor, Outdoor





nLight ECLYPSE™ System Controller by nLight

The nLight Relay Panel family delivers cost-effective 0-10V dimming and switching with the optional Field Configurable Relay for your building design needs. Smart and simple switching and dimming, the nLight Relay Panel communicates with an nLight network and supports up to 128 digital devices per nLight control zone. Offering a full range of panel sizes, the nLight Relay Panel is ideal for spaces that require full circuit control, with the optional flexibility of configuring single pole relays into a two or three-pole relays in the field.

Part No.	CI Code	Description
NECY MVOLT BAC ENC	*2653LR	nLight ECLYPSE, 120-277 VAC, BACnet/IP & MS/TP Enabled, NEMA Type 1 Metal Enclosure, Includes Wi-Fi Adapter



nBRG 8 nLight Bridge – 8 Port by nLight

The nLight Bridge increases the number of lighting control zones in an nLight system. This ability stems from the fact that each Bridge has 8 RJ-45 ports into which zones of daisy-chained nLight devices can connect. The Bridge also is an integral component of the communication backbone in an nLight network. Fundamentally, Bridges act as hubs by aggregating traffic from the connected downstream zones and placing it onto the backbone. They also act as routers by forwarding information from the backbone out to the applicable downstream zones.

Part No.	CI Code	Description
nBRG8 KIT	*205LLN	nBRG 8 Bridge, 120/277 VAC, Standard Temp / Humidity, Kit w/ Power Supply



nComKit Wired Commissioning Device by nLight

The nComKit is a stand-alone commissioning device for nLight Wired zones. The device uses a low voltage RJ45 connection to simplify communication with the nLight Wired network and a USB connection to allow for programming using SensorView on a PC.

Part No.	CI Code	Description
nCOMKIT G2	*2739WU	nCOMKIT nLight Commissioning Device, Single Piece Device



